



## **Lange Originals**

3651 South 700 East  
Salt Lake City, Utah 84106  
Phone - 801•262•7322  
FAX - 801•262•5087

[www.langeoriginals.com](http://www.langeoriginals.com)

# Installation Instructions for The 2-Bike Rack™

Thank you for your purchase. We know you will enjoy this unique rack especially designed for off road use. Bikes hang in a safer vertical position. This means bikes are safer and easier to mount. Follow these directions carefully for easier installation and operation.

## Tools Needed

Socket Set  
Crescent-type Wrench  
Screw driver  
Tape Measure

## Parts List

Qty.	Item	Pt. No.
1	Instruction sheet	1
2	Upper hooks	2
2	Front hooks	3
4	1/2" nut	4
8	1/2" flat washer	5
4	1/2" nut	6
1	Top rail	7
1	Vertical support	8
1	Back tire support	9
1	Front tire support & slide	10
2	1/2" eye bolt	11
2	1/2" flat washer	12
1	3/8" eye bolt w/nut	13
1	1/2" bolt	15
1	1/2" flat washer	16
4	Velcro straps	17
2	Nylon straps	18
2	Bungie cords	21

## Installation

Assemble the 2-place Rig-a-Rack as shown in fig. 1. The drawing references the numbers from the parts list. Next, mount the bike rack on your spare tire as show in fig. 1 and fig. 2. Make sure the rack is well over the tire as shown. Note the rear support arm is designed to wrap around the center-high mounted tail light. Tighten all screw-eyes with

the screw drive as a lever.

**Note: there is some adjustment of the vertical support, either up or down, depending on application. When this point is found tighten the eyebolt securely into the vertical bar and secure the lock nut. Bolts clamping the tire should compress the tire (make sure the tire has and maintains at least 32 pounds of pressure).**

For additional support, this bike rack requires two straps running from the top of the rack to the vehicle. The straps connect to the **exposed hinge of the top's rear window or to the roll bar if you have a soft top or no top roll bar.** Open the rear window, slip in the straps around the hinge and close the window. Then attach the straps to the top bar of The Rack.

In most installations, use a hinge or rear window mount for the strap mounting location. *Do not mount bikes without attaching the straps first! Straps should be tight enough to tension the rack. The bikes hang by the handle bars as shown in figure 2. Slip the loop in the velcro straps onto the rubber hooks and use to secure the handle bars of each bike to the hook. Use the bungie cords provided to secure the bottom of the bikes as shown in figure 2.*

## Final Check

Make sure all bolts and nuts are tight. Check the rack for tightness and that the rack is secure before mounting bikes. Test the rack for load safety after mounting the bikes. When driving off, check the bikes frequently for the first hour or so to make sure the bikes are riding properly.

## Warranty

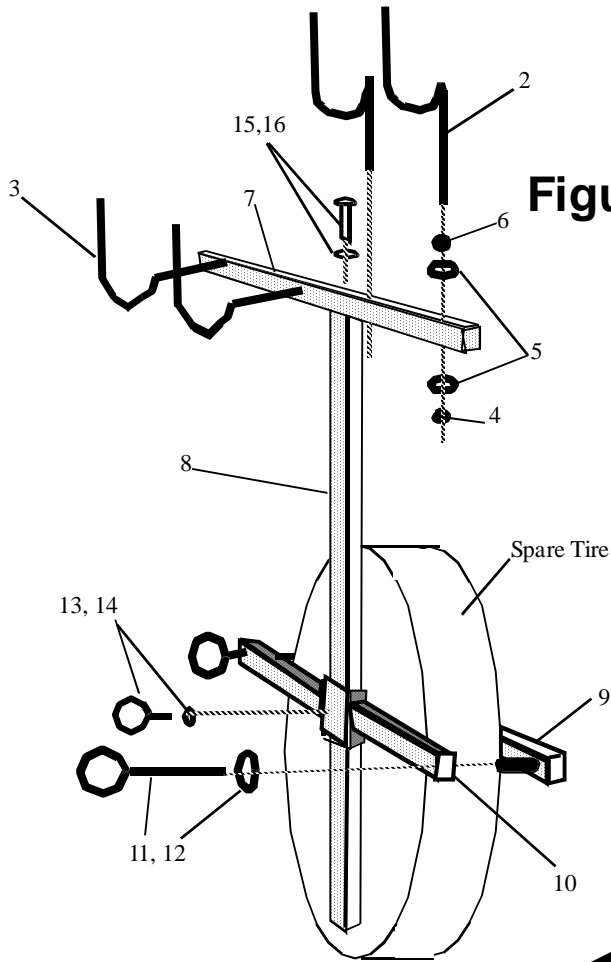
Lange warranties this product against defects for one year from the date of purchase. Soft rubber parts or straps are warranted for 90 days. This warranty does not cover damage due to abuse or neglect. This warranty does not cover consequential damage of bikes or vehicles other than replacement or repair of the Rig-a-Rack, at Lange's option. Please call or write before returning parts or rack.



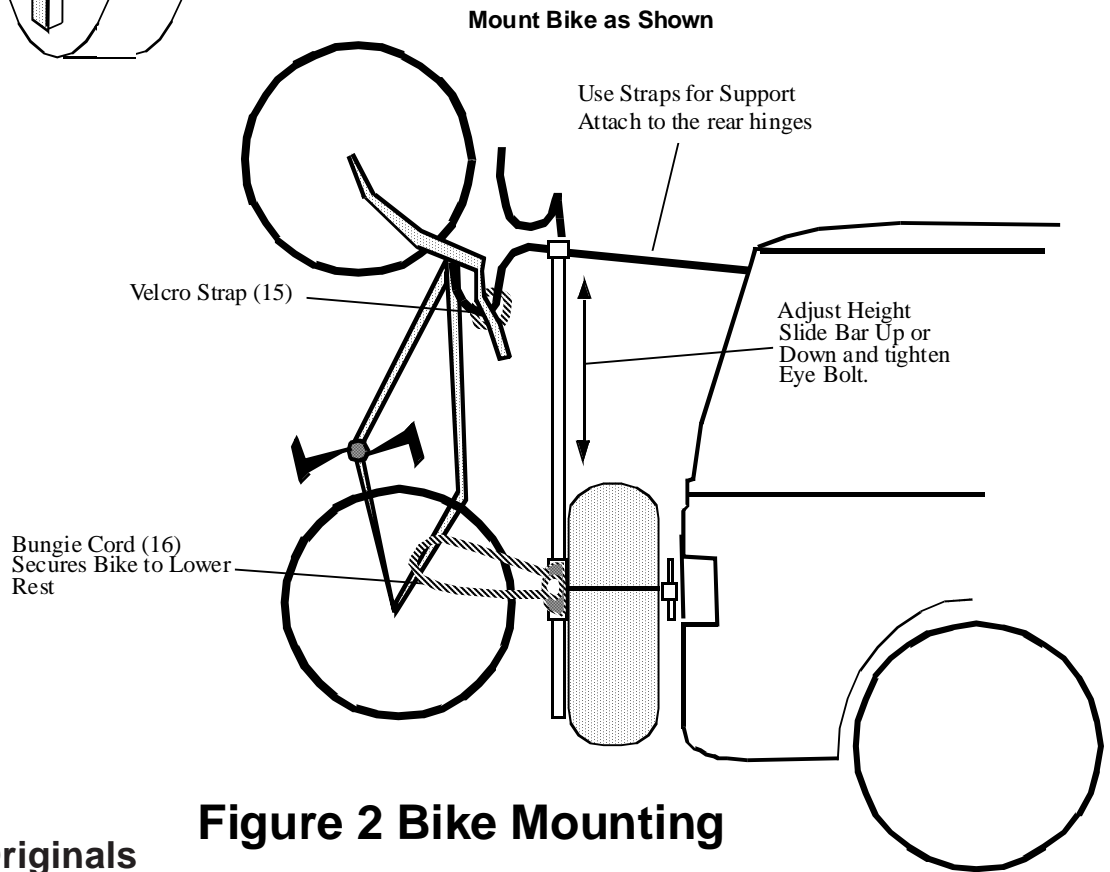
**Lange Originals**

3651 South 700 East  
Salt Lake City, Utah 84106  
Phone - 801•262•7322  
FAX - 801•262•5087

[www.langeoriginals.com](http://www.langeoriginals.com)



**Figure 1 General Assembly**



**Figure 2 Bike Mounting**



**Lange Originals**

3651 South 700 East  
 Salt Lake City, Utah 84106  
 Phone - 801•262•7322  
 FAX - 801•262•5087

[www.langeoriginals.com](http://www.langeoriginals.com)

# Installation Instructions for

# The Rack™

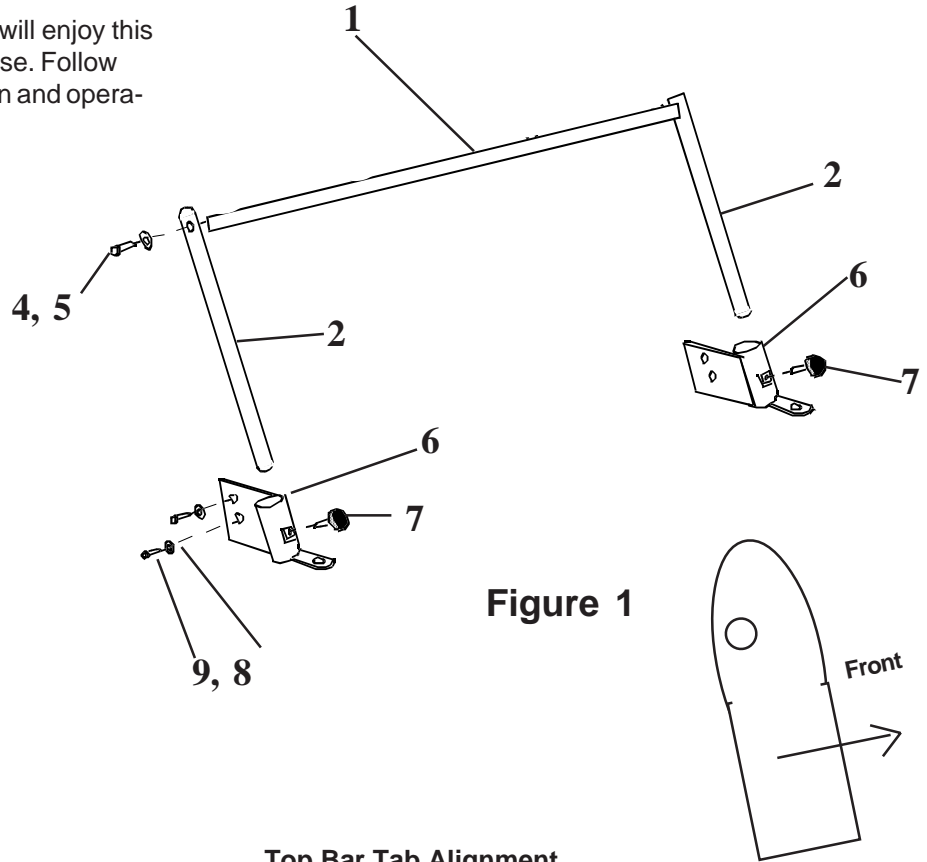
Thank you for your purchase. We know you will enjoy this unique rack especially designed for off road use. Follow these directions carefully for easier installation and operation.

**Tools Needed**

- Socket Set
- Crescent-type Wrench

**Parts List**

Qty.	Item	Pt. No.
1	Instruction sheet	1
1	Top Bar	2
2	Side Bars	3
2	1/2" flat washer	4
2	1/2" Bolt	5
2	Side Brackets	6
2	3/8" Knob	7
4	5/16" flat washer	8
4	5/15" Bolt	9



**Figure 1**

**Installation**

Remove the two torqs bolts at each of the lower sides of the windshield frame. Mount the two side brackets as shown in fig. 1 using the 5/16" bolts and washers. Align so that the tube is parallel with the windshield frame. Tighten securely.

Assemble The Rack as shown in fig. 1 by doing the following in order: Place the side bars in the side brackets and note that the hole on the side bar (2) is offset (see fig. 1 for correct orientation). Do not tighten the 3/8" knobs until the complete frame is assembled.

Next, bolt the top bar in place,. Tighten the 1/2" bolts with washers securely note that the open space in the bar should be up. Next tighten the 3/8" knob to secure the frame.

**Top Bar Tab Alignment**

Use the holes in the top bar to secure carried items with straps or bungee cords. You may want to purchase optional foam protectors designed for this bar and optional support clamps for canoe and kayaks. Call the factory for availability and price. 801-262-7322

If you do not purchase the optional support clamps make sure your load will not shift to the sides. Use appropriate attachment devices to secure your load. Cross winds are dangerous. Always secure your load carefully and observe speeds that are slower than normal.

You can use the tabs on the mounting bracket for a light or a mirror. Lange sells a mirror specifically designed for this application to be used when the vehicle doors are removed. Call the factory for details and pricing.

The Rack can be removed by loosening the knobs and lifting The Rack off.

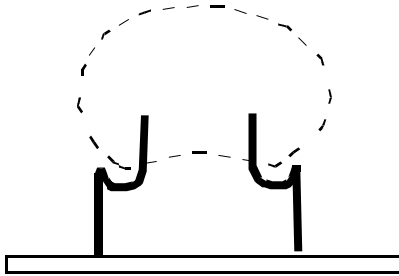


**Lange Originals**

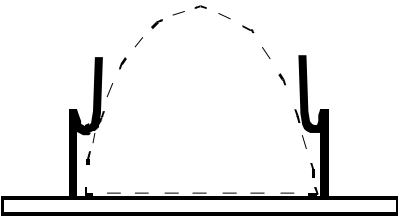
3651 South 700 East  
 Salt Lake City, Utah 84106  
 Phone - 801•262•7322  
 FAX - 801•262•5087

## Mounting Water Sports Equipment

Follow the diagrams in figures 2 and 3 for placement of canoes, kayaks, or wind surfers. It is important to safely support the equipment by quality tie downs and by positioning the front and rear bars to prevent movement. Pay particular attention to the front and back movement caused by acceleration and braking. A shifting load can leave the rack causing severe damage to your vehicle and to the equipment. Always secure long loads to the front and rear bumper in addition to The Rack.

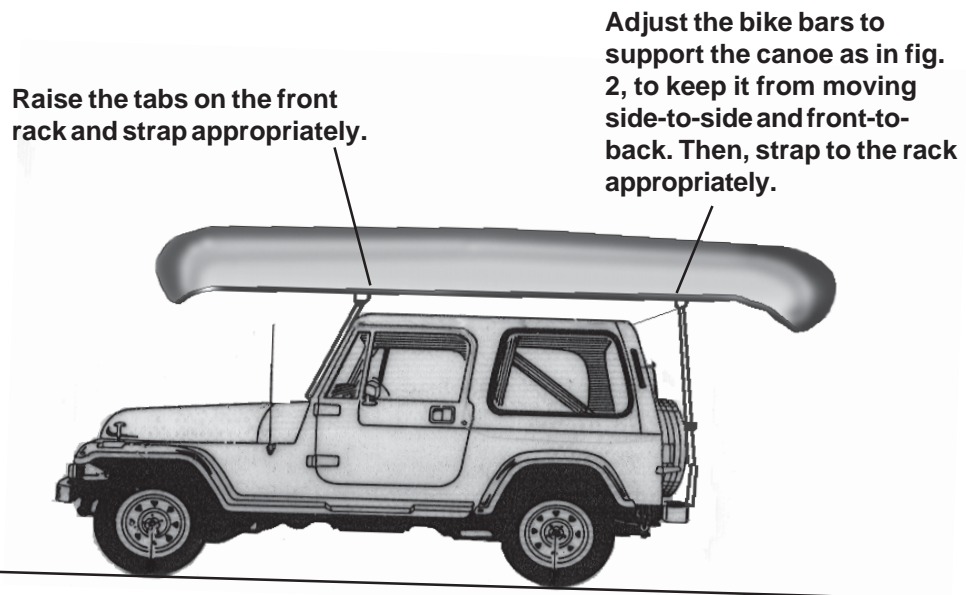


**Figure 2 Suggested Mounting Configuration for the Rear Bike Rack**



## Warranty

Lange warranties this product against defects for one year from the date of purchase. Soft rubber parts or straps are warranted for 90 days. This warranty does not cover damage due to abuse or neglect. This warranty does not cover consequential damage of bikes or vehicles other than replacement or repair of the Rig-a-Rack, at Lange's option. Please call or write before returning parts or rack.



**Figure 3 Positioning the Load Safely.**



## Lange Originals

3651 South 700 East  
Salt Lake City, Utah 84106  
Phone - 801•262•7322  
FAX - 801•262•5087

[www.langeoriginals.com](http://www.langeoriginals.com)